

- 1 **What is the process called when plants use light and water to make sugar?**
 - A Fertilization
 - B Photosynthesis**
 - C Pollination
 - D Distraction

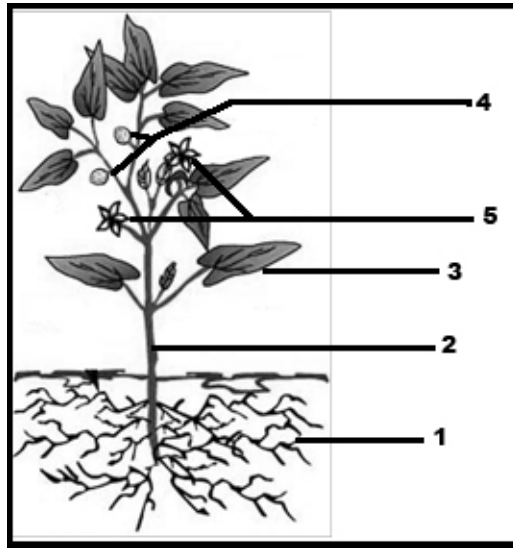
- 2 **What two items do plants use during photosynthesis?**
 - F Sunlight and oxygen
 - G Water and carbon dioxide
 - H Water and oxygen
 - J Carbon dioxide and oxygen

- 3 **What gas is most necessary for photosynthesis to occur?**
 - A Carbon monoxide
 - B Nitrogen
 - C Carbon dioxide**
 - D Oxygen

- 4 **Which of the following do plants need to make their own food?**
 - F Sunlight
 - G Bacteria
 - H Flowers
 - J Oxygen

- 5 **What do humans depend on to create the oxygen they breathe?**
 - A Soil
 - B Plants**
 - C Water
 - D Animals

6



Which section of the plant is responsible for photosynthesis?

- F Section 5
- G Section 3
- H Section 1
- J Section 4

7 **During photosynthesis, what substance is transported from the roots to the leaves?**

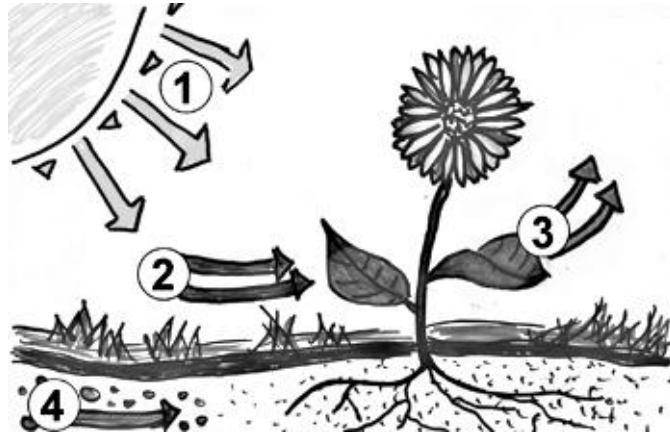
- A Water
- B Oxygen
- C Glucose
- D Carbon dioxide

8 **During photosynthesis, what is created in the green parts of a plant?**

- F Xylem
- G Pollen
- H Sugar
- J Light

9 **A large fire in the Dismal Swamp caused a thick layer of smoke to fill the air in surrounding cities. The smoke could affect the area's plants' abilities to perform photosynthesis by —**

- A putting too much carbon dioxide in the air
- B causing the flowers to wilt
- C blocking out sunlight
- D not providing enough oxygen



In the diagram of photosynthesis, what gas is the plant absorbing shown by arrow number 2?

- F Water
- G Carbon dioxide
- H Sunlight
- J Oxygen

11 Where does the energy come from in photosynthesis?

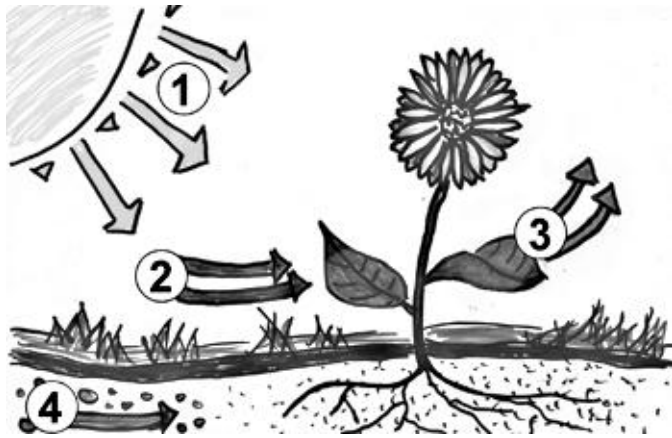
- A Oxygen
- B Minerals
- C Sun
- D Water

12 What substance do animals and humans use that is released from leaves during photosynthesis?

- F Chlorophyll
- G Carbon dioxide
- H Oxygen
- J Water

13 Photosynthesis occurs in which of these organisms?

- A Mushroom
- B Sunfish
- C Luna moth
- D Sunflower plant



Which section of the picture shows the light energy that is needed for photosynthesis?

- F Section 1
- G Section 3
- H Section 4
- J Section 2

15 Which gas is given off by plants?

- A Oxygen
- B Nitrogen
- C Hydrogen
- D Helium